



Common Report & Upload Engine User Guide

Version 2022.08

© 2022 by Deutsche Börse AG ("DBAG"). All rights reserved.

All intellectual property, proprietary and other rights and interests in this publication and the subject matter of this publication are owned by DBAG, other entities of Deutsche Börse Group or used under license from their respective owner. This includes, but is not limited to, registered designs and copyrights as well as trademark and service mark rights. Methods and devices described in this publication may be subject to patents or patent applications by entities of Deutsche Börse Group.

Specifically, the following trademarks and service marks are owned by entities of Deutsche Börse Group: 1585®; A7®; Buxl®; C7®; CDAX®; CEF®; CEF alpha®; CEF ultra®; CFF®; Classic All Share®; Clearstream®; CX®; D7®; DAX®; DAXglobal®; DAXplus®; DB1 Ventures®; DBIX Deutsche Börse India Index®, Deutsche Börse®; Deutsche Börse Capital Markets Partner®, Deutsche Börse Commodities®; Deutsche Börse Venture Network®; Deutsches Eigenkapitalforum®; DivDAX®; eb.rexx®; eb.rexx Jumbo Pfandbriefe®; ERS®; eTriParty®; Eurex®; Eurex Bonds®; Eurex Clearing Prisma®; Eurex Improve®; Eurex Repo®; Euro GC®; ExServes®; EXTF®; F7®; FDAX®; FWB®; GC Pooling®; GCPI®; GEX®; Global Emission Markets Access – GEMA®; HDAX®; iNAV®; L-DAX®; L-MDAX®; L-SDAX®; L-TecDAX®; M7®; MDAX®; N7®; ODAX®; ÖkoDAX®; PROPRIIS®; REX®; RX REIT Index®; Scale®; SCHATZ-FUTURE®; SDAX®; ShortDAX®; StatistiX®; Strategy Wizard®; T7®; TecDAX®; Technology All Share®; TRICE®; USD GC Pooling®; VDAX®; VDAX-NEW®; Vestima®; Xscreen®, Xemac®; Xentric®, Xetra®; Xetra-Gold®; Xpect®; Xpider®; XTF®; XTF Exchange Traded Funds®; We make markets work®. The following trademarks and service marks are used under license and are property of their respective owners:

- All MSCI indexes are service marks and the exclusive property of MSCI Barra.
- ATX®, CECE® and RDX® are registered trademarks of Vienna Stock Exchange AG.
- SLI®, SMI® and SMIM® are registered trademarks of SIX Swiss Exchange AG.
- The STOXX® indexes, the data included therein, and the trademarks used in the index names are the intellectual property of STOXX Limited and/or its licensors. Eurex derivatives based on the STOXX® indexes are in no way sponsored, endorsed, sold or promoted by STOXX and its licensors and neither STOXX nor its licensors shall have any liability with respect thereto.
- STOXX iSTUDIO® is a registered trademark of STOXX Ltd., Zug, Switzerland.
- "Bloomberg®" and the respective Bloomberg Commodity Indexes are service marks of Bloomberg Finance L.P. and its affiliates, including Bloomberg Index Services Limited ("BISL"), the administrator of the index (collectively, "Bloomberg") and have been licensed for use for certain purposes by Eurex.
- PCS® and Property Claim Services® are registered trademarks of ISO Services, Inc.
- Korea Exchange, KRX, KOSPI and KOSPI 200 are registered trademarks of Korea Exchange Inc.
- TRADEGATE® is a registered trademark of Tradegate AG Wertpapierhandelsbank.
- EEX® is a registered trademark of European Energy Exchange AG.
- Flexible is better.® is a registered trademark of Axioma, Inc.

The trademarks listed above do not represent a complete list. Information contained in this publication may be erroneous and/or untimely. All descriptions, examples and calculations contained in this publication are for illustrative purposes only and may be changed without further notice. Neither DBAG nor any entity of Deutsche Börse Group makes any express or implied representations or warranties regarding the information contained herein. This includes without limitation any implied warranty of the information's merchantability or fitness for any particular purpose and any warranty with respect to the accuracy, correctness, quality, completeness or timeliness of the information. Neither DBAG nor any entity of Deutsche Börse Group shall be responsible or liable for any third party's use of any information contained in this publication under any circumstances. The information contained in this publication is not offered as and does not constitute investment advice, legal or tax advice, an offer or solicitation to sell or purchase any type of financial instrument.

List of Abbreviations

BF	Börse Frankfurt
BFZ	Börse Frankfurt Zertifikate
CRE	Common Report Engine
CRLF	Carriage return line feed
CUE	Common Upload Engine
DBAG	Deutsche Börse AG
LSOC	Legally Segregated Operationally Commingled
PuTTYgen	Putty Key Generator
RDF	Reference Data File
REGEX	Regular Expression
RSA	Rivest, Shamir and Adleman (public-key cryptosystem)
SFTP	SSH File Transfer Protocol
SSH	Secure Shell
WinSCP	Windows Secure Copy (a free and open-source SFTP and FTP client for Windows)

Table of Contents

1	General information	5
1.1	Intended Audience	5
1.2	SSH File Transfer Protocol	5
1.3	SSH/SFTP tools	5
2	Overview	6
2.1	Features and Functionality	6
2.2	Security, Authorisation and Access	6
2.3	Hardware Requirements	7
2.4	Software Requirements	7
3	Setup process	9
3.1	How to generate and save a SSH key pair	9
3.2	Example for key generation using PuTTYgen (MS Windows)	9
3.2.1	Generate Certificate within the Member Section	12
3.3	User Administration	14
3.3.1	Generate Certificate within the Member Section	16
4	Connecting to the CRE and/or CUE	19
4.1	CRE Connectivity Data	19
4.2	CUE Connectivity Data	19
4.3	Example checking connectivity and connecting with WinSCP	20
4.4	Using WinSCP to connect to the CRE and/or CUE	21
4.5	Troubleshooting and Debugging Examples	23
4.5.1	Error 1: No matching SSH key found	24
4.5.2	Error 2: No key used at all	25
4.6	Download reports and files (CRE)	25
4.6.1	Automated Download: Sample Script	26
4.7	Uploading Files (CUE)	26
5	Structures and Naming Conventions	27
5.1	Directory structure in the CRE private member area	27
5.2	Directory structure in the CRE public area	28
5.3	CUE Structure	28
6	Report and File Naming Conventions	29
6.1	CRE General Report Naming Conventions	30
6.1.1	Derivatives Markets Report Naming Conventions	31
6.1.2	Cash Markets Report Naming Conventions	32
6.1.3	CCP (C7 SCS) Report Naming Conventions	33
6.1.4	Eurex Repo Report Naming Conventions - Private Area	34
6.1.5	Eurex Repo Report Naming Conventions - Public Area	35
6.1.6	EurexOTC Clear and Eurex Risk Operation Report Naming Conventions	36

6.1.7	Buy-In Agent Report Naming Conventions	37
6.2	CRE General File Naming Conventions	38
6.2.1	T7 Derivatives Markets File Naming Conventions	38
6.2.2	T7 Derivatives Markets Reference Data File (RDF) Naming Conventions	39
6.2.3	T7 Xetra File Naming Conventions	40
6.2.4	T7 Xetra Reference Data File (RDF) Naming Conventions in Public Area	41
6.2.5	T7 Börse Frankfurt File Naming Conventions	42
6.2.6	T7 Börse Frankfurt and Börse Frankfurt Zertifikate Reference Data	43
6.2.7	CCP (C7 SCS) File Naming Conventions	44
6.2.8	Eurex Clearing Prisma File Naming Conventions - Public Area	45
6.2.9	Eurex Clearing Prisma File Naming Conventions for Member Specific Files	46
6.2.10	Regulatory Reporting Eurex and FWB (Non-MIFIR Reporting)	47
6.3	Corrupted Reports and Files	48
6.4	Report Availability	48
6.5	Historical Reports: Restore Directory	48
6.6	Streamlined EOL Encoding	48
7	Appendix A	49
7.1	Example of successful WinSCP connection log file	49
8	Appendix B	53
8.1	Markets and Markets Included	53
8.2	CRE Environment Number and Area	54
9	Change Log	55

1 General information

The Common Report Engine (CRE) allows a centralized provision of reports and non-transactional files from multiple exchange markets. The service is provided as a SSH File Transfer Protocol (SFTP) server and allows participants to easily retrieve all their reports and non-transactional files from a single source. The Common Upload Engine (CUE) is a separate part of the CRE which allows admitted participants of the DBAG Group the upload of participant data to dedicated services provided by DBAG Group. Participants can automate the download and upload of data files via SFTP.

This service is independent from the existing trading and clearing infrastructure, and participants can choose their preferred hardware platform and operating system.

Communication with the CRE and CUE is based on OpenSSH. The OpenSSH server authenticates users using the standard methods supported by the SSH protocol (<https://www.openssh.com/specs.html>).

All examples provided in this document refer to either the OpenSSH distribution or the PuTTY installable package for Windows.

1.1 Intended Audience

This document is intended for system developers, system and security administrators maintaining their systems to interact with the CRE and/or CUE services offered by DBAG. It assumes that the reader is familiar with OpenSSH public/private key pair authentication methods (i.e. handling of public/private key pair) and the use of SFTP clients and/or scripts.

The purpose of this document is to provide an overview on how to obtain access to the CRE and/or CUE, how to deposit keys in the Member Section <https://membersection.deutsche-boerse.com> and how to manage the download and/or upload of files and reports.

1.2 SSH File Transfer Protocol

This document refers to “SFTP” in numerous instances. To avoid misunderstandings, “SFTP” stands for the “SSH File Transfer Protocol” as defined here: <https://www.sftp.net>

1.3 SSH/SFTP tools

While access to SSH based services is part of most Unix based distributions, PuTTY is open-source software that is available for MS Windows. It can be used to easily establish SSH and SFTP sessions (<http://www.putty.org>).

2 Overview

2.1 Features and Functionality

Download (CRE):

- The Common Report Engine is the default provider for all Deutsche Börse T7 cash and derivatives markets, Eurex Clearing's C7, CCP/C7 SCS, EurexOTC Clear, Eurex Clearing Prisma, Buy-In Agent and "Regulatory Reporting Eurex and FWB (Non-MIFIR Reporting)" reports and files. Participants can download the reports and files they are interested in.
- An extended history of minimum 10 business days for all reports and files is kept on the CRE.
- Participants may set up more than one connection to access the CRE from different locations depending on their business requirements.
- The reports can be downloaded manually or automated (by using a script).

Upload (CUE):

- Files can be uploaded to the admitted service environments (such as simulation & production).
- All uploads will be virus checked.
- All uploads will have a functional plausibility check, e.g. if the naming convention is correct or whether the file is corrupt.
- Participants will receive an initial response if the uploaded file fulfils the initial upload requirements.
- Afterwards the CUE will perform the transmission to the admitted service automatically.

2.2 Security, Authorisation and Access

In general, the setup process for the participant involves the following three steps:

1. Generating an OpenSSH compliant public/private key pair
2. Creating a CRE and/or CUE user and uploading the public key in the Member Section
3. Logging into the CRE and downloading reports and/or logging into the CUE and uploading files via SFTP client

To provide a secure service, the OpenSSH authentication method is used. This method requires an OpenSSH compliant public/private key pair, which the participant must generate. This process ensures that the participants authenticate themselves against the CRE and CUE. The public key must be generated and uploaded to the Member Section, while the participant keeps the private key. By using a key-based authentication method, no login passwords must be transferred over the Internet at any time.

- Participants need to provide a public/private key pair to access their reports. It is recommended to limit access to the CRE and CUE using dedicated IP addresses.
- Security of data will be ensured by the usage of SSH2.

The illustration below provides an overview on how to access the CRE and/or CUE and how to set up the access process to download/upload all necessary files.

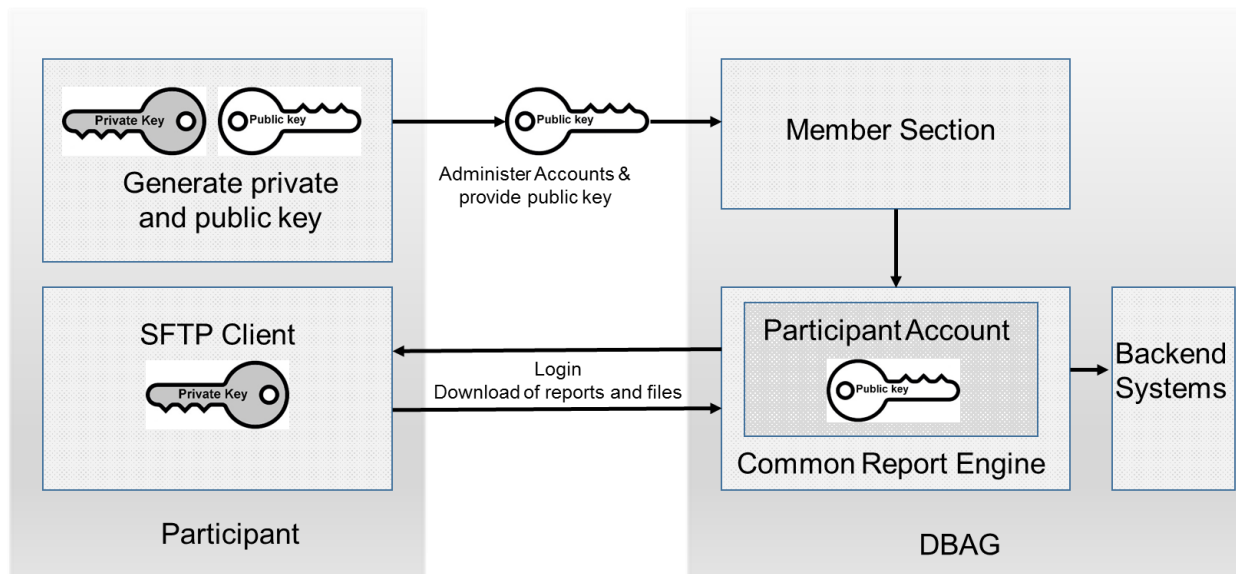


Figure 1: Process overview to connect to the CRE

Note: The figure above is not a true representation of servers and networks involved, but rather provides a simplified functional overview which is similar for the CUE.

The public key is provided to the CRE or CUE via the Member Section.

The private key always remains in the hands of the user. The user will need the individual private key at any time a login to the CRE or CUE is attempted.

It is recommended to create a public/private key pair for every user connecting to the CRE and/or CUE.

2.3 Hardware Requirements

There are no particular hardware requirements to access the CRE and/or CUE servers. The servers can be accessed from any computer running a SFTP client program.

2.4 Software Requirements

A SFTP client compliant with a current SSH2 version is required to connect to the CRE or CUE.

- OpenSSH provides a large suite of secure tunnelling capabilities, several authentication methods, and sophisticated configuration options.
- DBAG has disabled all known insecure Ciphers, Key Exchange Algorithms and MAC Algorithms for the SSH server.

Known secure parameters for each method are listed below:

Key Exchange Algorithms:

- ✓ curve25519-sha256
- ✓ curve25519-sha256@libssh.org
- ✓ diffie-hellman-group18-sha512
- ✓ diffie-hellman-group14-sha256
- ✓ diffie-hellman-group16-sha512
- ✓ diffie-hellman-group-exchange-sha256
- ✓ ecdh-sha2-nistp256

- ✓ ecdh-sha2-nistp384
- ✓ ecdh-sha2-nistp521

Ciphers (encryption Algorithms):

- ✓ chacha20-poly1305@openssh.com
- ✓ aes256-gcm@openssh.com
- ✓ aes128-gcm@openssh.com
- ✓ aes256-ctr
- ✓ aes192-ctr
- ✓ aes128-ctr

MAC Algorithms:

- ✓ hmac-sha2-512-etm@openssh.com
 - ✓ hmac-sha2-256-etm@openssh.com
 - ✓ umac-128-etm@openssh.com
 - ✓ hmac-sha2-512
 - ✓ hmac-sha2-256
-

3 Setup process

3.1 How to generate and save a SSH key pair

As mentioned in chapter 2, public/private keys are used for authentication by the CRE and CUE infrastructure. The participant must generate the pair of keys.

- A minimum of 2048 bits for the generated key is required and the key type must be SSH2 RSA. Once the parameters above are set, the key can be generated.
- The key generation process will produce public and private keys. See details about key handling and usage in sections below.
- Save the public key files and private key files for future use.
- In no case should the private key be transferred over an insecure network, e.g. via e-mail, and it should always be kept only by the participant.
- It is highly recommended to protect the key file with a passphrase. This will encrypt the private key when it is saved in a secure location on the local machine. Using passphrases for batch SSH-keys requires familiarity with the SSH-agent authentication subsystem. Participants should be aware that the use of strong encryption methods and encrypted SSH-keys is advisable but will raise administration efforts and system complexity.
- To generate an SSH public/private key, various freeware tools are available for download from the Internet, such as PuTTY or OpenSSH. Otherwise the embedded “Key Generator” tool in the Member Section can be used.

3.2 Example for key generation using PuTTYgen (MS Windows)

See the following example of key pair generation.

- Make sure the latest stable version of PuTTYgen is being used.
 - Set key parameters type and bit number as shown below.
 - Follow the instructions on the screen and move the mouse over the blank area for a while.
-

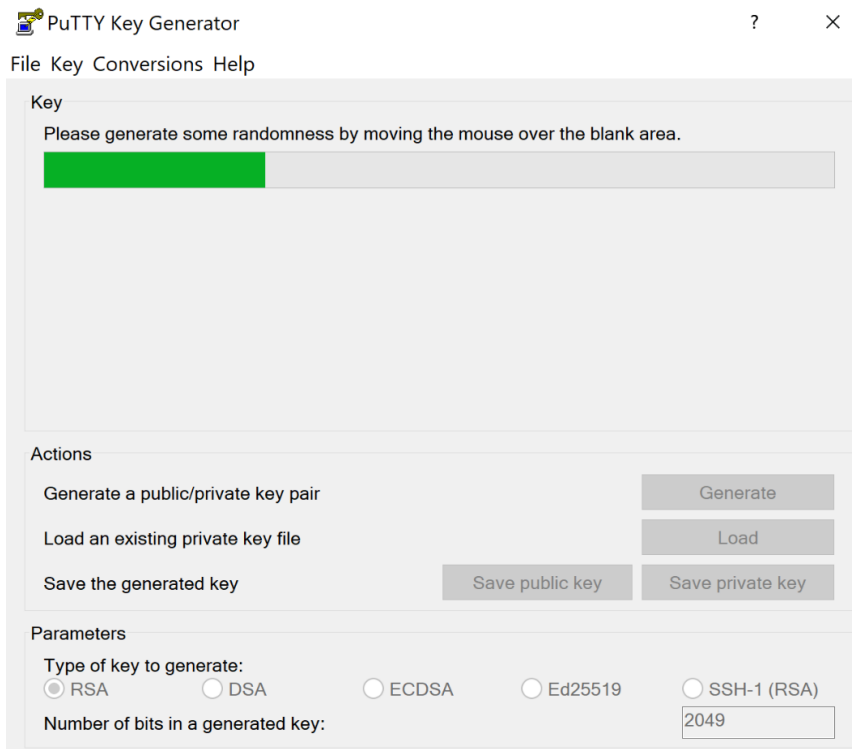


Figure 2: Generate key (screenshot of PuTTYgen)

- Please note: In some rare cases, one key bit is not recognised by the DBAG Member Section. Therefore, it is advisable to generate a key with a minimum of 2049 bit or more before uploading the public key into the DBAG member section.
- The private key must be accessible for the participant's SFTP client to login successfully. By clicking the buttons highlighted in Figure 3, participants can save their private and public keys in the PuTTY format for further use with the PuTTY tools or WinSCP.

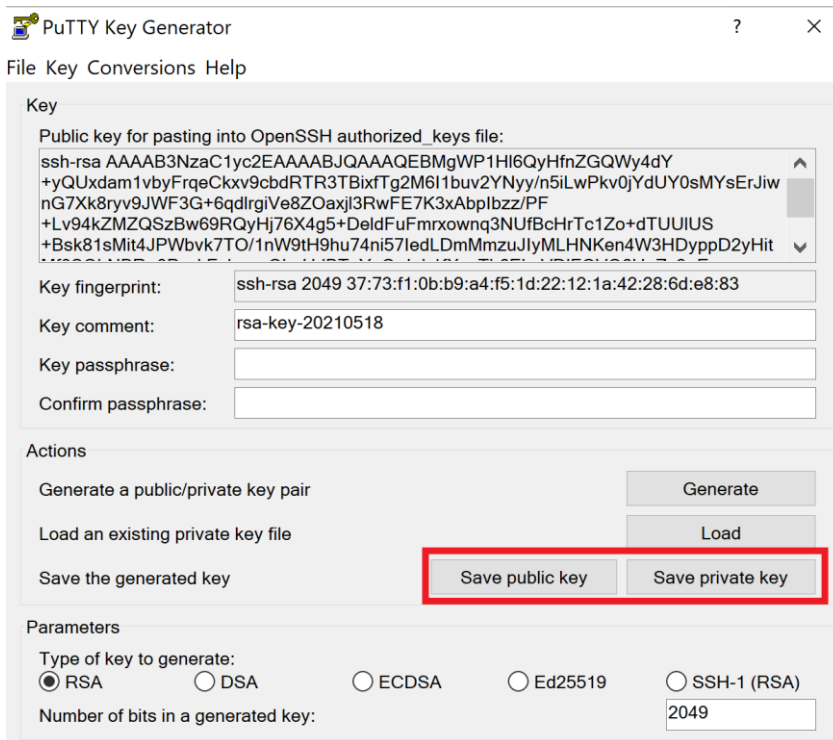


Figure 3: Saving the generated public and private keys in the PuTTY format (screenshot from tool PuTTYgen)

- The OpenSSH private key can also be exported in the OpenSSH format for use with other software working with OpenSSH keys (such as Unix SFTP).

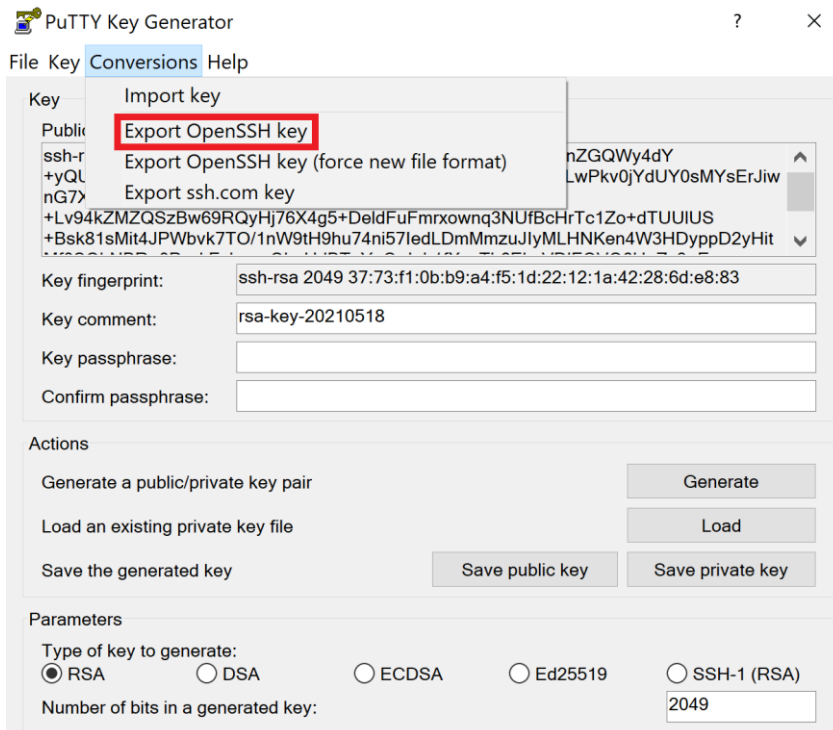


Figure 4: Saving the OpenSSH private key for future use (screenshot from tool PuTTYgen)

- The public key must be saved in OpenSSH format to be uploaded to DBAG Member Section.

- Copy the marked text from PuTTYgen to a text editor, such as notepad and save it with the extension “.pub”.
- Make sure that this line has no “End Of Line” character (EOL) at the end!

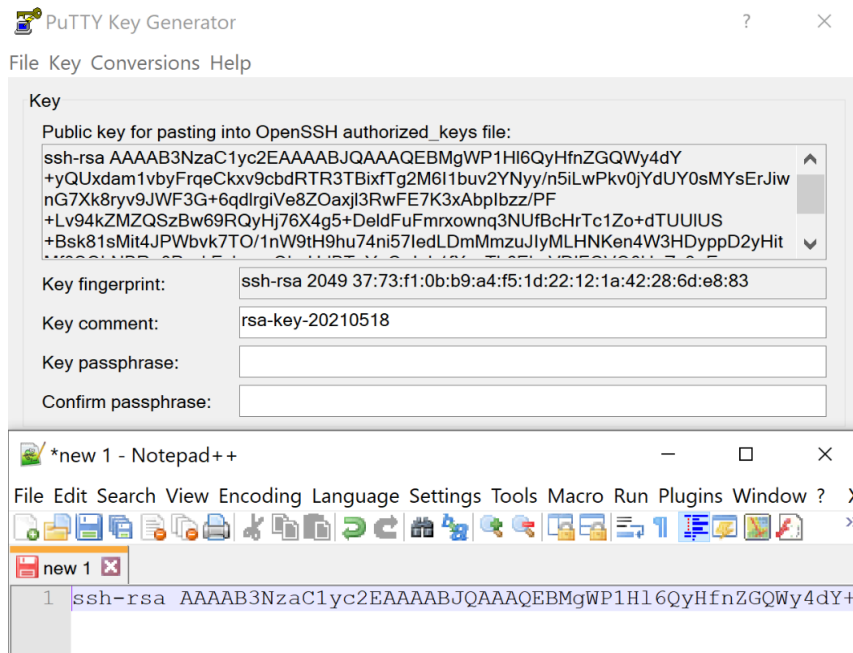


Figure 5: Saving the public key for DBAG Member Section upload (screenshot from tool PuTTYgen and Notepad++)

- Public keys must consist of one line only. Only public OpenSSH keys in this format can be used and can be successfully uploaded in the DBAG Member Section.
- After uploading, the participant must wait for the configuration data (users, keys, markets, etc.) to be transferred to the CRE and/or CUE database. Usually, this processing takes place in the late evening.
- In general, access to the CRE and/or CUE will be possible after two business days. (After the first business day access is possible but folders will be empty, after the second business day download and upload of reports and files is possible.)
- Changes to existing users will take effect on the next day.

Please note that the public key does NOT have to be signed by a certification authority.

3.2.1 Generate Certificate within the Member Section

Alternatively, the SSH key can be created in the Member Section by pressing the “Generate Certificate” button.

Navigate to the Member Section (see next chapter)

Click "Generate Certificate" to start the application

Add Certificate

Certificate Data:

Valid From:

Always valid:

Valid To:

Comment:

Figure 6: Generate Certificate window

Click "Generate" for a new keypair

Keylength:

Passphrase:

Comment:

Figure 7: Generate Certificate

Save the public and private key

Generate Keypair

Keylength:

Passphrase:

Comment:

Figure 8: Save public and private key

3.3 User Administration

Before the CRE and/or CUE can be accessed, a user account must be set up and the OpenSSH public key must be uploaded in the Member Section. This task can be performed by the “Technical User Administrator”. Administration rights to become a “Technical User Administrator” may be requested using the Member Section.

Navigate to: “Member Section” <https://member.deutsche-boerse.com> → Technical Connection → Requests & Configuration → Self Service Certificates → “Report Engine User” or “Upload Engine User”
Administration rights to become a “Technical User Administrator” may be requested using the Member Section.

An overview of all existing and already created CRE or CUE users are displayed, and it is possible to edit, modify or delete existing users by simply selecting them from the list.

All users can be identified by their UserID, which is generated during the account setup process. A UserID looks like this example: 1027709_000001

- The first part, 1027709 is the so-called DBAG business partner ID which is used in the Member Section for identification of a customer (Legal Identity). A business partner may have several memberships, for instance Eurex, Xetra, Eurex Repo & EEX; each membership is represented by a Member ID.
- The second part, 0000001 is a sequential user number, automatically assigned by the system.

In addition, new users can be created in the Member Section:

The new input screen will be opened by clicking on “Create User” where all necessary user information needs to be entered.

The screenshot shows the 'Create User' form in the Member Section. The form is titled 'Report Engine User' and has a 'Create User' button. The form fields include: User ID (1027709_000061), Description, Engine Configuration (Member ID, Environment, Market), Network Data (IP Address), and Certificates (Status, Valid From, Valid To, Comment). The 'Create User' button is highlighted with a red box.

Figure 9: Input screen in the Member Section to create a new user (in this example a CRE user, the process for CUE users is identical).

1. Description (optional):

In the field “Description” a short description of the user should be given. Please note that the description is not the UserID. Any description of the user may be entered here.

The UserID field itself will be filled by the system automatically

2. Engine Configuration:

“Engine configuration” needs to be clicked to enter the “MemberID”, a “Market” and an “Environment”. A selection of all applicable combinations for this specific user will be displayed from which a choice can be made.

For all market directories supported by the CRE (underlying markets), also the relevant associated markets are now available for selection as a mandatory element during the setup.

Please note: One user can have access for multiple combinations of member IDs, markets and environments, but not more than 13 entries.

Examples of combinations for underlying markets:

Market	Underlying Market
EEX	EUREX
Eurex Repo	EUREX
Malta Stock Exchange	XETRA

For a complete overview refer to Appendix C.

3. Network Data (Optional):

Access for a user can be restricted to a single IP address. An additional IP address can be added by clicking on “Add Row”. This is optional, but highly recommended by DBAG. Select an IP address and click on “Remove Row” to remove it.

The address pattern entered here will be included in the configuration file for this user account. A wildcard (*) can be used in the pattern to represent zero or more characters. To combine multiple patterns, a pattern list can be used; each pattern must be on a new line. To prevent mistakes a logical check of the IP address is provided.

4. Certificate:

The certificate refers to the public SSH key created as described in chapter 3.1. The certificate/public key is only used to authenticate a user/role. The user/role permissions (i.e. access to member/market/etc.) were assigned at step 2 in this chapter.

The creation of a private/public key pair for every user that may connect to the CRE and/or CUE is recommended.

A public key needs to be uploaded by clicking on “Upload Certificate”. A popup window will appear where the OpenSSH public key must be uploaded. Browse to the location of the key and click “Add”:

Add Certificate

Upload Certificate Generate Certificate

Certificate Data: ssh-rsa
AAAAB3NzaC1yc2EAAAADAQABAAQCHly5fq8ZnI79I/dG
MgQlmfAbsJvO5Z2fCWGOkbmRzOi+7vg9p+aAYSQ91pHgqI
OegjW1OUyzptkYShctz581mij9s8h+I9O9103PDQ8X5Z08+
pbkcPTfgGogGykuUVdyE2/fd9Y4LX++JBWToZ5IZNLEacUd

Valid From: 27.07.2021

Always valid:

Comment:

Add Cancel

Figure 10: Popup screen to upload the public key

The private key file must be accessible for the participant's SFTP client but should never be sent to DBAG.

Key expiration:

Users will be notified by email in due time about upcoming expiration. At the latest one day before a certificate/public key expires, the existing key needs to be prolonged (upload the existing key once more and define a new expiration date) or a new private/public key pair must be generated, and the newly generated public key needs to be uploaded.

3.3.1 Generate Certificate within the Member Section

Alternatively, the SSH key can be created in the Member Section by pressing the "Generate Certificate" button

Click "Generate Certificate" to start the application

Add Certificate

Upload Certificate Generate Certificate

Certificate Data:

Valid From:

Always valid:

Valid To:

Comment:

Add Cancel

Figure 11: Generate Certificate (key pair)

Click "Generate" for a new keypair

Keylength: 2048

Passphrase:

Comment:

Generate

Figure 12: Key length & Generate key pair

Save your public and private key

Generate Keypair

Keylength: 2048

Passphrase:

Comment:

Generate

> Private Key

> Public Key

Figure 13: Save public and private key

The final step is to save the changes: Click on "Save" to automatically create the UserID

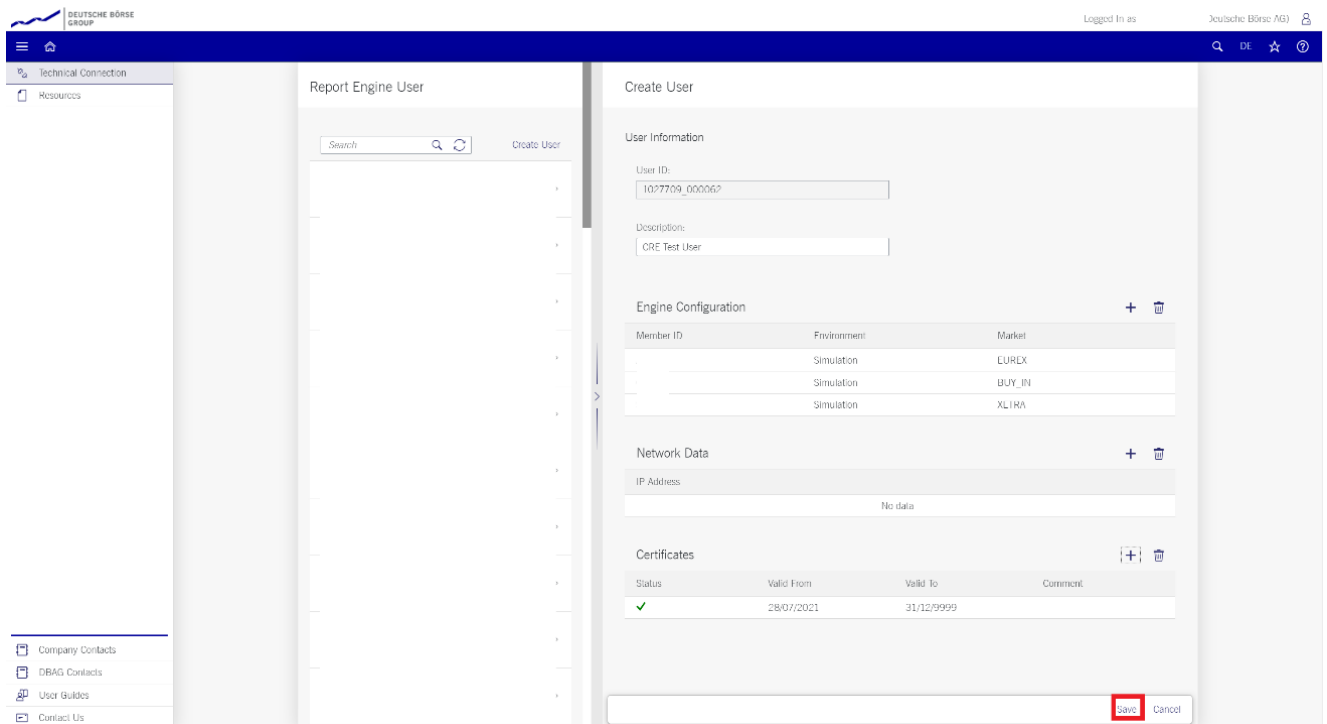


Figure 14: Exemplary CRE user information after the successful creation of a CRE user

The generated UserID is displayed in the Report Engine User-, respectively Upload Engine User -Overview table, as well as in the field UserID when selecting a user in the table on the main screen.

All Central Coordinators and their deputies are informed via e-mail whenever a new CRE and/or CUE user has been successfully setup, modified or deleted.

Due to technical restrictions and introduction of the public area, more than 13 environments per UserID for one IP destination and port should not be added!

When initially creating a CRE and/or CUE user, the information will be available after two business days. All subsequent changes to a user become active after the next business day.

4 Connecting to the CRE and/or CUE

Participants may use an SFTP client of their choice to access the CRE and/or CUE server to upload files or download their reports.

The CRE and CUE does not offer any interactive SSH sessions nor any kind of browser access.

The following information is required to log into the servers:

- UserID which has been generated by successfully setting up a new user in the Member Section
- The IP address of the CRE and/or CUE
- The private ssh key fitting to the public key uploaded in the Member Section

Please Note: The CRE and CUE will allow a maximum of 50 sessions per user. Therefore, please make sure that unused sessions are closed, and the user is logged out.

4.1 CRE Connectivity Data

The CRE is divided into areas.

Area A gives access to reports of the following markets and services:

- T7 cash markets including Xetra (XETR + XFRA) and partner exchanges
- T7 derivatives markets including Eurex and EEX
- Eurex Clearing's C7
- Eurex Clearing's PRISMA
- EurexOTC Clear
- CCP (C7SCS)

Area B gives access to reports of the following markets and services:

- Eurex Repo
- Buy-In Agent
- Regulatory Reporting Eurex and FWB (Non-MIFIR Reporting)

The IP's used for access to the CRE are shown in the table below.

CRE infrastructure IP addresses					
	Leased line		Internet	Port	
	A	B		Public	Private
Area A	193.29.90.67	193.29.90.99	193.29.90.132	2221	2222
Area B				2231	2232

4.2 CUE Connectivity Data

The CUE is divided into areas.

Area A gives upload access to files of the following service:

- LSOC

Common Upload Engine			
Leased line		Internet	Port
A	B		
193.29.90.70	193.29.90.102	t.b.a.	2251

Area B gives upload access to files of the following service:

- Regulatory Reporting Eurex and FWB (Non-MIFIR Reporting, short-code and algoID upload)

Common Upload Engine			
Leased line		Internet	Port
A	B		
193.29.90.88	193.29.90.119	193.29.90.158	2261

If a client is being used to connect to the CRE and/or CUE, the client will prompt once to accept the DBAG Server Host Key, The Server Host Key will be remembered for future logins by the client.

If a customized script is being used to access, the Server Host Key fingerprint must be integrated where appropriate. The DBAG Server Host Key for the CRE and/or CUE can be found by using “ssh-keyscan”. “ssh-keyscan” is used to collect the public SSH host keys, which can then be entered into the “known_hosts”.

4.3 Example checking connectivity and connecting with WinSCP

Connectivity to the CRE and CUE can be tested via Telnet:

- Test the connection using Telnet

```
# telnet 193.29.90.67 2222
Trying 193.29.90.67...
Connected to 193.29.90.67.
Escape character is '^]'.
SSH-2.0-OpenSSH_5.3

Protocol mismatch.
Connection to 193.29.90.67 closed by foreign host.
# telnet 193.29.90.99 2222
Trying 193.29.90.99...
Connected to 193.29.90.99.
Escape character is '^]'.
SSH-2.0-OpenSSH_5.3

Protocol mismatch.
Connection to 193.29.90.99 closed by foreign host.
#
```

Figure 15: Test of CRE using telnet

Alternatively use netcat:

- `nc -z -w5 193.29.90.158 2261`
- Output: Connection to 193.29.90.158 port 2261 succeeded!

or Open SSL:

- `openssl s_client -connect 193.29.90.158:2261`

WinSCP is an open-source free SFTP client, SCP client, FTPS client and FTP client for MS Windows. Its main function is file transfer between a local and a remote computer. Beyond this, WinSCP offers scripting and basic file manager functionality.

Source: <http://winscp.net/eng/index.php>

4.4 Using WinSCP to connect to the CRE and/or CUE

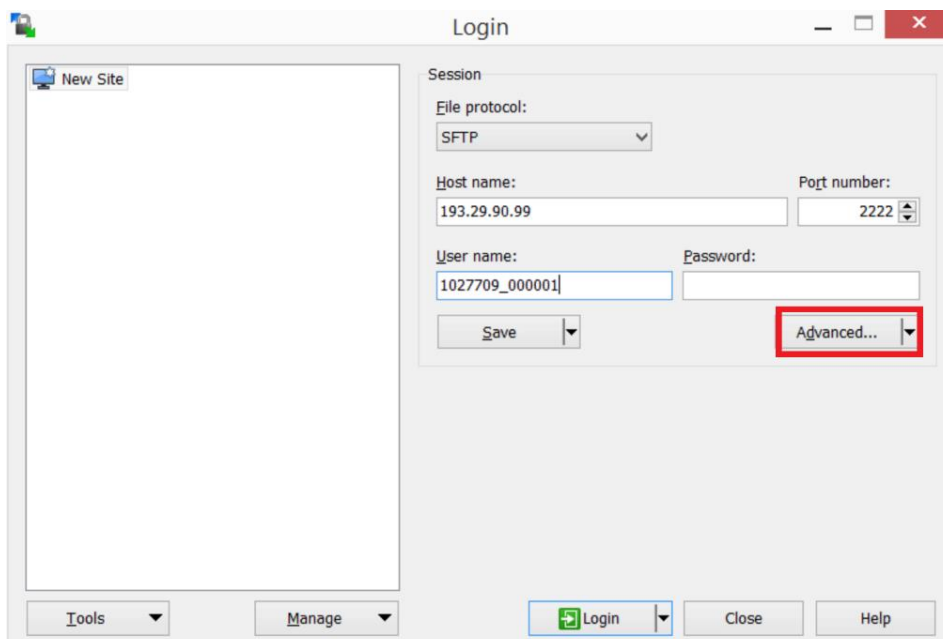


Figure 16: Input screen required to log in to the CRE and /or CUE – input IP and Port (in this case CRE area a – “private” folder)

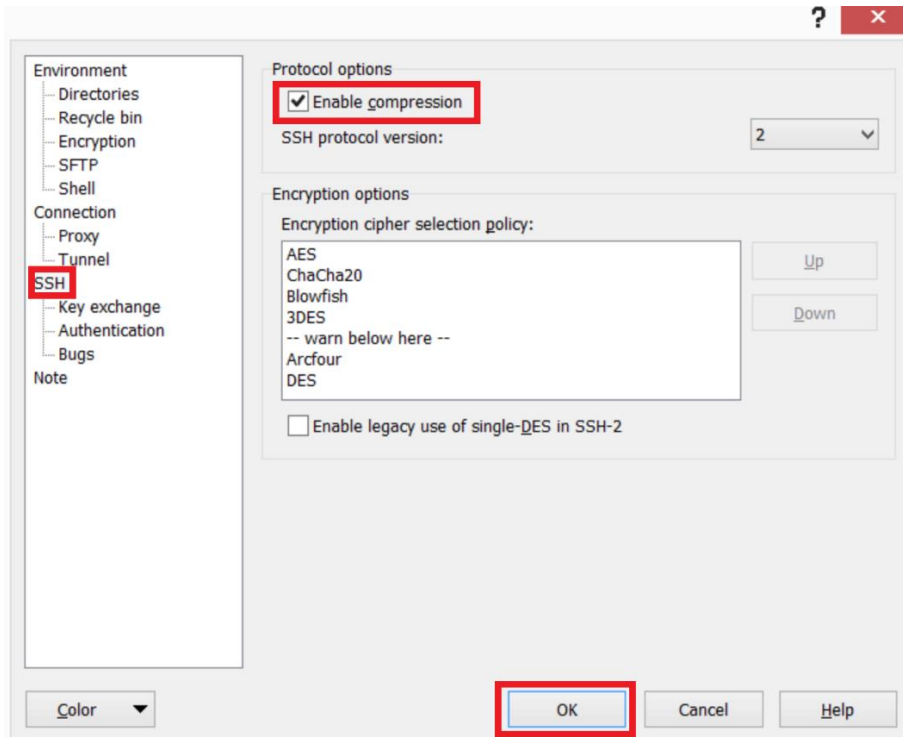


Figure 17: Enable compression for SSH transfer

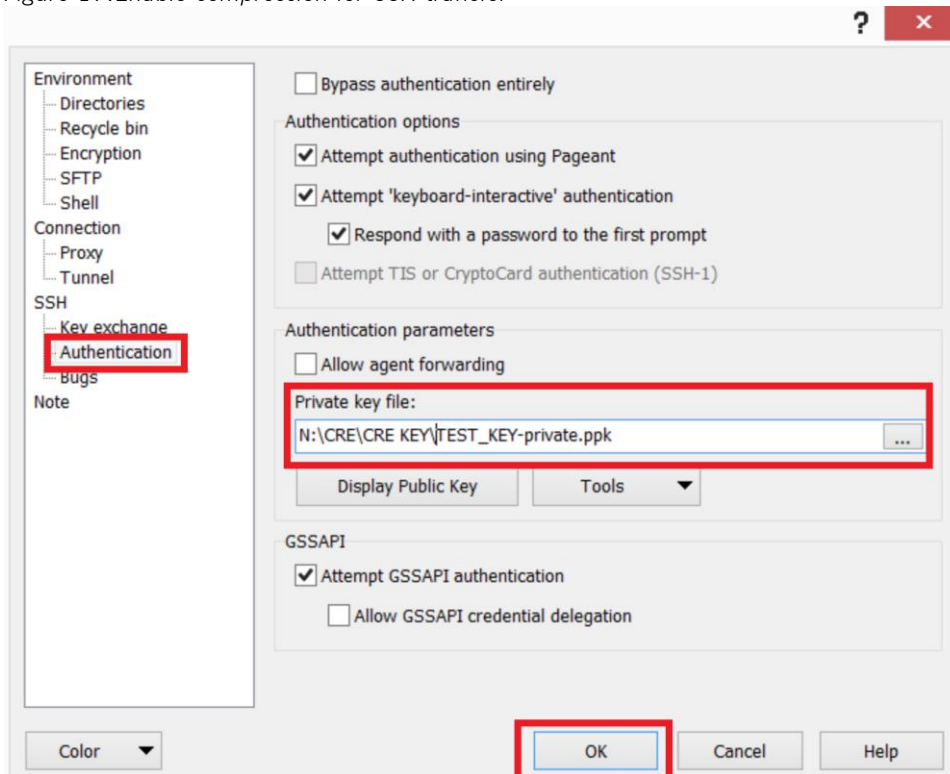


Figure 18: Location of the private key file to be entered.

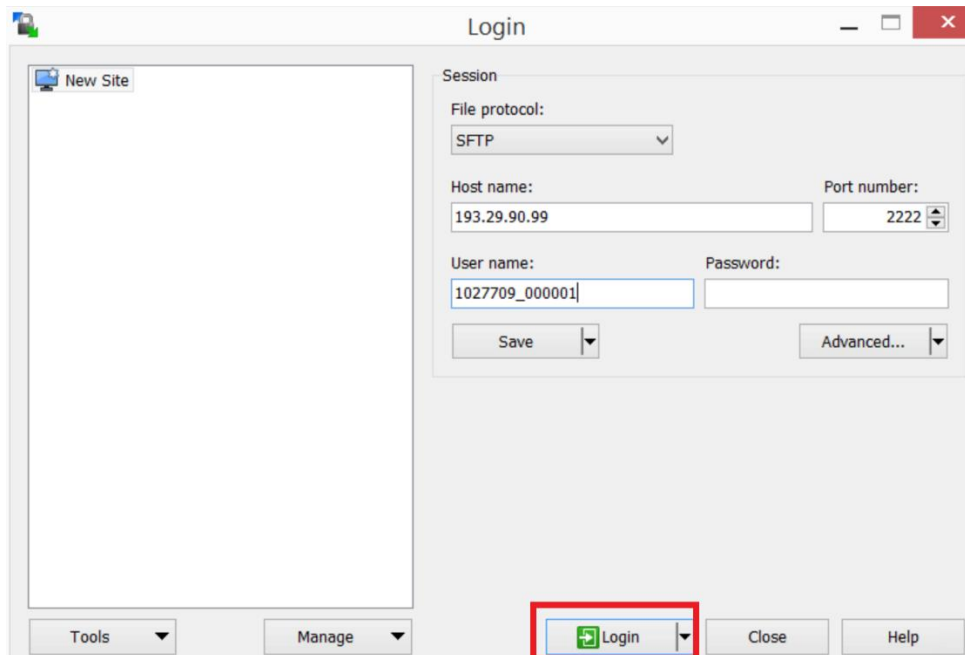


Figure 19: Successful login to the CRE with WinSCP

4.5 Troubleshooting and Debugging Examples

If problems connecting to the CRE and/or CUE arise, please contact the DBAG Technical Account Manager. Detailed information about what exactly happened, what the problem is including error messages and screenshots are required to diagnose such problems.

The ssh client's `-v` switch allows you to run ssh in verbose mode, that prints debugging information about SSH connection progress, which is really useful for debugging connections, authentication, and any configuration problems. There are different levels of verbosity; using multiple `-v` flags increases the verbosity (maximum verbosity level is 3).

The two most common errors are described as examples below.

4.5.1 Error 1: No matching SSH key found

```
$ sftp -oPort=2222 -vvv 1027709@193.29.90.67

Connecting to 193.29.90.67...
OpenSSH_4.3p2, OpenSSL 0.9.8e-fips-rhel5 01 Jul 2008
debug1: Reading configuration data /root/.ssh/config
debug1: Reading configuration data /etc/ssh/ssh_config
debug1: Applying options for *
debug2: ssh_connect: needpriv 0
<--- SNIP --->
debug3: preferred gssapi-with-mic,publickey,keyboard-
interactive,password
debug3: authmethod_lookup publickey
debug3: remaining preferred: keyboard-interactive,password
debug3: authmethod_is_enabled publickey
debug1: Next authentication method: publickey
debug1: Offering public key: first_name last_name (2010-10-11)
debug3: send_pubkey_test
debug2: we sent a publickey packet, wait for reply
debug1: Authentications that can continue: publickey
debug1: Offering public key: rsa-key-20110217
debug3: send_pubkey_test
debug2: we sent a publickey packet, wait for reply
debug1: Authentications that can continue: publickey
debug1: Offering public key: rsa-key-20101207
debug3: send_pubkey_test
debug2: we sent a publickey packet, wait for reply
Received disconnect from 193.29.90.67: Too many authentication
failures for 1027709_000001
Couldn't read packet: Connection reset by peer
```

4.5.2 Error 2: No key used at all

```
$ sftp -oPort=2222 -vvv 1027709_000001@193.29.90.67

Connecting to 193.29.90.67...
OpenSSH_4.3p2, OpenSSL 0.9.8e-fips-rhel5 01 Jul 2008
debug1: Reading configuration data /root/.ssh/config
debug1: Reading configuration data /etc/ssh/ssh_config
debug1: Applying options for *
debug2: ssh_connect: needpriv 0

<--- SNIP --->

debug1: Authentications that can continue: publickey
debug3: start over, passed a different list publickey
debug3: preferred gssapi-with-mic,publickey,keyboard-
interactive,password
debug3: authmethod_lookup publickey
debug3: remaining preferred: keyboard-interactive,password
debug3: authmethod_is_enabled publickey
debug1: Next authentication method: publickey
debug1: Offering public key: /root/.ssh/kdump_id_rsa
debug3: send_pubkey_test
debug2: we sent a publickey packet, wait for reply
debug1: Authentications that can continue: publickey
debug1: Trying private key: /root/.ssh/id_rsa
debug3: no such identity: /root/.ssh/id_rsa
debug1: Trying private key: /root/.ssh/id_rsa
debug3: no such identity: /root/.ssh/id_rsa
debug2: we did not send a packet, disable method
debug1: No more authentication methods to try.
Permission denied (publickey).
Couldn't read packet: Connection reset by peer
```

The complete command line switch overview may be found in the SFTP manual page.
Please be aware that no interactive session is possible (SCP), only SFTP service is supported.
For troubleshooting with DBAG please be able to provide the above-mentioned log/debug information.

4.6 Download reports and files (CRE)

Participants may use the SFTP client of their choice to access the CRE's server. After successful login, participants will be able to access their reports and files either manually, i.e., by browsing through their folder(s) on the server, or by downloading them automatically via script.

In case a connection to the CRE is not possible or an existing connectivity was interrupted please do not try to login again in very short time intervals (i.e., several tries every few seconds), but rather wait a short duration (a minute or more) and then try again. If this has been tried a few times and still no connection can be established, please contact DBAG Technical Support.

4.6.1 Automated Download: Sample Script

To provide an indication of the level of effort to be put into the programming of a script, a sample script for the widely used bourne-again shell (bash) is provided below:

```
#!/bin/bash

if [ $# -ne 6 ]; then
    echo
    echo "Usage:"
    echo "`basename $0 ` <ssh key file> <sftp user> <CRE node>
<member id> <environment> <market>"
    echo
    exit 15
fi

keyfile=$1
user=$2
node=$3
member_id=`echo -n $4 |tr -s [:upper:] [:lower:]`
env=`echo -n $5 |tr -s [:lower:] [:upper:]`
market=`echo -n $6 |tr -s [:upper:] [:lower:]`
sftp=/usr/bin/sftp
echo=""
date=`date +%Y%m%d`
echo "
    cd $member_id/$env/$market
    get "$date"*
    exit " | $sftp -C -i $keyfile -b - $user@$node
```

Please keep in mind that this script has been kept simple and universal and may need customisation to meet individual requirements.

Since this is an example for an operating system running a bash shell, please note the WinSCP is also capable of scripting and automated job processing on MS Windows.

4.7 Uploading Files (CUE)

Participants may use the SFTP client of their choice to access the CUE's server. After successful login, participants will be able to upload their files.

In case a connection to the CUE is not possible or an existing connectivity was interrupted please do not try to login again in very short time intervals (i.e., several tries every few seconds) but rather wait a short duration (a minute or more) and then try again. If this has been tried a few times and still no connection can be established, please contact DBAG Technical Support.

5 Structures and Naming Conventions

5.1 Directory structure in the CRE private member area

After a successful login, the user is placed to the chrooted file system root (/) - the home directory. A user will not be able to access any files outside his home directory and sub-directories. A business partner home directory may look like the sample below (user view).

Example 1	Example 2
<pre> / +---abcex +---P +---eurex +---date +---S +---eurex +---date +---abcfr +---AS +---P +---eurex +---date +---S +---ccp +---date +---eurex +---date +---xetra +---date </pre>	<pre> ----pakfr +---AS +---P +---xetra +---date +---xetra_ffm2 +---date +---S +---xetra +---date +---xetra_ffm2 +---date </pre>

Figure 20: Examples of directory structure in member area.

The first level of directories corresponds to the respective MemberID configured, followed by the environment (second directory level) and the market and date, where:

- AS=Advanced Simulation (Available only for Eurex Repo)
- P=Production
- S=Simulation

In example 1, member ABCEX has been configured for the Eurex production and simulation, and ABCFR has simulation environments for Eurex and Xetra and CCP / C7 SCS and the production environment for Eurex. In example 2, member PAKFR has been configured for the Xetra and Börse Frankfurt production environment and for the Xetra and Börse Frankfurt simulation environment.

Please note that neither the directory structure nor access permissions can be manipulated by Deutsche Börse or the individual user. Access to member IDs, environments and markets is solely configured by the participant's Central Coordinator/ Technical User Administrator in the Member Section and "translated" into permissions for directories on the CRE.

Since CRE users are restricted to read-only (CUE users additionally can upload files) access to the CRE file system, file and directory operations are limited to commands like cd, get, help, ls, pwd, etc. Any operation on directories or files within the file system that may incorporate or require manipulations to the file system content are not permitted.

5.2 Directory structure in the CRE public area

In the public area, non-transactional and non-participant specific reports and files are published. Therefore, a virtual participant directory “publi” is provided on the CRE. Participants can browse the virtual participant directory “publi” using the same authorisation mechanisms to access non-transactional and non-participant-specific reports and files. To access the public Area A, participants must use port 2221 instead of port 2222. To access the public Area B, participants must use port 2231 instead of port 2232.

Example 3
<pre>+---publi +---AS +---P +---ccp +---eurex +---xetra +---xetra_ffm2 +---S +---ccp +---eurex +---20120814 +---20120823 +---xetra +---xetra_ffm2</pre>

Fig 16: Examples of directory structure in public area.

For the CRE public section, the same directory structure is applicable as for the CRE participant area. Please refer to chapter 5.1 for further details about the directory structure.

5.3 CUE Structure

CUE report and file naming conventions and further procedures are described in a separate documentation issued by the respective service.

6 Report and File Naming Conventions

The CRE has the following REGEX (regular expression) pattern as naming conventions:

```
[0-9]{2}[0-9A-Z]{8}[0-9A-Z]{5}[0-9]{8}[A-Z0-9\\_\\-]{0,34}\\.[A-Z]{3}\\.ZIP
```

Maximum length of a report file name is 64 characters!

The naming conventions in the CRE public area are the same as in the CRE member area, whereas all reports and files in the CRE public area use the member ID PUBLI.

Please Note: Report and file naming conventions and further procedures for the CUE are described in a separate document issued by the respective service.

Versioning

In case a report or file needs to be corrected (due to inconsistencies, incompleteness, or corrupted data) the original zip file name will be modified. A versioning indicator will be added with a convention of -V[0-9]{2}, starting with -V01 and maximum versions of -V99.

Please note: Report names will always be static. Delivery of a new version of a given report can only be observed with the help of the versioning indicator added to the name of the corresponding zip file.

Examples for reports or files:

Original version: 01RPTCI731PAKFR202103160900.XML.ZIP
1st correction: 01RPTCI731PAKFR202103161000-V01.XML.ZIP
2nd correction: 01RPTCI731PAKFR202103161000-V02.XML.ZIP
[...]

Please note that the versioning indicator additionally applies to all report and file naming conventions for zip containers below.

6.1 CRE General Report Naming Conventions

Field	Meaning	Remark
[0-9]{2}	Environment ID	i.e. 00 Eurex Prod
[0-9A-Z]{8}	Report name	i.e. RPTTC540
[0-9A-Z]{5}	Member ID	i.e. PAKFR
[0-9]{8}	Business date	YYYYMMDD
[A-Z0-9_-\]{0,34}	Flexindicator 1 Flexindicator 2 Timestamp Sequence number ...	Optional Optional Optional Optional Optional
\.	Dot	
[A-Z]{3}\.ZIP	Extension for compressed reports	CSV.ZIP, LIS.ZIP, TXT.ZIP, XML.ZIP, PDF.ZIP

Depending on the market the optional Flexindicator 1 and 2 have various meanings. Flexindicator 1 and 2, timestamp, sequence number and possible future enhancements are optional. Depending on the type of report they may remain empty.

Compression:

Reports and Files are provided in a compressed format. Compressed reports and files can be identified by the respective suffix. Depending on the market, the suffixes comprise:

Description	Suffix	Example
ZIP Format	(.ZIP)	(FILRDF for Eurex or Xetra)
Compressed text format	(.TXT.ZIP)	(CB001 for Eurex)
Compressed XML format	(.XML.ZIP)	(CB001 for Eurex)

6.1.1 Derivatives Markets Report Naming Conventions

Field	Meaning	Remark
[0-9]{2}	Environment ID	00,01 (Prod, Simu Eurex Clearing) 90, 95 (Prod, Simu Eurex Trading)
[0-9A-Z]{8}	Report name	i.e. RPTTC540
[0-9A-Z]{5}	Member ID	i.e. PAKFR
[0-9]{8}	Business date	YYYYMMDD
[0-9A-Z]{5}	Flexindicator 1	Only for 00 and 01: Eurex Clearing Member Id
[A-Z]{4}	Flexindicator 2	intraday/end of day identifier
[A-Z]{4}	Flexindicator 3	Exchange MIC Code
\.	Dot	
[A-Z]{3}\.ZIP	Extension for compressed reports	CSV.ZIP, LIS.ZIP, TXT.ZIP, XML.ZIP, PDF.ZIP

Example Eurex Clearing report Prod 00RPTCC755GDBXX20210319GDBXX.TXT.ZIP

Example Eurex Clearing report Simu 01RPTCC755GDBXX20210319GDBXX.TXT.ZIP

Example Eurex T7 Trading report Prod 90RPTRD125DGBXX20210319.TXT.ZIP

Example Eurex T7 Trading report Simu 95RPTRD125DGBXX20210319.TXT.ZIP

Current list of valid Eurex MIC codes:	
XEUR	Eurex
XEEE	European Energy Exchange*

*European Energy Exchange might also use alternative MIC codes for market segments

6.1.2 Cash Markets Report Naming Conventions

Field	Meaning	Remark
[0-9]{2}	Environment ID	51, 52 (Xetra T7 Prod, Simu) 61, 62 (Börse Frankfurt T7 Prod, Simu)
[0-9A-Z]{8}	Report name	i.e. RPTTC810
[0-9A-Z]{5}	Member ID	i.e. PAKFR
[0-9]{8}	Business date	YYYYMMDD
[A-Z]{4}	Flexindicator 1	MIC Code
[A-Z0-9]{2}	Flexindicator 2	T7 Indicator
\.	Dot	
[A-Z]{3}\.ZIP	Extension for compressed reports	CSV.ZIP, LIS.ZIP, TXT.ZIP, XML.ZIP

Example Xetra T7 report Prod 51RPTCB068GDBXX20210319XETRT7.TXT.ZIP

Example Xetra T7 report Simu 52RPTCB068GDBXX20210319XETRT7.TXT.ZIP

Example Börse Frankfurt T7 report Prod 61RPTCB068GDBXX20210319XFRAT7.TXT.ZIP

Example Börse Frankfurt T7 report Simu 62RPTCB068GDBXX20210319XFRA7.TXT.ZIP

Current list of valid Xetra MIC codes for Xetra T7	
XETR	Xetra Frankfurt
XMAL	Xetra Malta
XBUL	Xetra Bulgaria
XFRA	Börse Frankfurt

6.1.3 CCP (C7 SCS) Report Naming Conventions

Field	Meaning	Remark
[0-9]{2}	Environment ID	20, 21(Prod, Simu)
[0-9A-Z]{8}	Report name	i.e. RPTCE270
[0-9A-Z]{5}	Member ID	i.e. PAKFR
[0-9]{8}	Business date	YYYYMMDD
[0-9]{2}	Flexindicator 1	settlement/continuous run number
[0-9A-Z]{5}	Flexindicator 2	CCP reporting run type
\.	Dot	
[A-Z]{3}\.ZIP	Extension for compressed reports	CSV.ZIP, LIS.ZIP, TXT.ZIP, XML.ZIP

Example CCP report Prod 20RPTCC745GDBXX20210319GDBXX.TXT.ZIP

Example CCP report Simu 21RPTCC711GDBXX20210319GDBXX.TXT.ZIP

Example C7 SCS report Prod 20RPTCE897ABCFR20201013.XML.ZIP

Example C7 SCS report Simu 21RPTCE897ABCFR20201013.XML.ZIP

6.1.4 Eurex Repo Report Naming Conventions - Private Area

Field	Meaning	Remark
[0-9]{2}	Environment ID	14, 15, 19 (Prod, Simu, Advanced Simu)
[0-9A-Z]{8}	Report name	i.e. RPTMTX01
[0-9A-Z]{5}	Member ID	i.e. PAKFR
[0-9]{8}	Business date	YYYYMMDD
[0-9]{2}	Counter	01
[0-9 A-Z]{8}	Extract Name	The extract name provided by the member, filled with trailing zeros to the 7th character. 8th character is "S" for scheduled extract or "N" for Run Now.
[0-9 A-Z]{5}	Segment	e.g. GCP00
\.	Dot	
[A-Z]{3}\.ZIP	Extension for compressed reports	CSV.ZIP, XLS.ZIP

Example Eurex Repo report Prod 14RPTMTX01002XX2019032813GCP00LOSGCP00.XLS.ZIP

Example Eurex Repo report Simu 15RPTMTX01002XX2019032813GCP00LOSGCP00.XLS.ZIP

6.1.5 Eurex Repo Report Naming Conventions - Public Area

Field	Meaning	Remark
[0-9]{2}	Environment ID	14, 15 (Prod, Simu)
[0-9A-Z]{8}	File name	RPTEAS01
[0-9A-Z]{5}	Member ID	PUBLI
[0-9]{8}	Business date	YYYYMMDD
[0-9A-Z_\\-]{0,34}	Flexindicator 1	Report Group definition: "GCPOO" (GCP Baskets) "REPOM" (REPO Baskets)
	Flexindicator 2	n.a.
\.	Dot	
[A-Z]{3}\.ZIP	Extension for compressed files	CSV.ZIP, LIS.ZIP, TXT.ZIP, XML.ZIP

Example Eurex Repo file Prod 14RPTEAS01PUBLIYYYYMMDDGCPOO.CSV.ZIP

14RPTEAS02PUBLIYYYYMMDDREPOM.CSV.ZIP

Example Eurex Repo file Simu 15RPTEAS01PUBLIYYYYMMDDGCPOO.CSV.ZIP

15RPTEAS02PUBLIYYYYMMDDREPOM.CSV.ZIP

6.1.6 EurexOTC Clear and Eurex Risk Operation Report Naming Conventions

Field	Meaning	Remark
[0-9]{2}	Environment ID	OTC Clear: 84, 85 (EurexOTC Prod, Simu) Risk Operation: 00, 01 (Prod, Simu)
[0-9A-Z]{8}	Report name	i.e. RPTCB202
[0-9A-Z]{5}	Member ID	i.e. GDBXX
[0-9]{8}	Business date	YYYYMMDD
[0-9]{6}	Flexindicator 1	Time HHMMSS, used only for intraday reports
[0-9]{0,10}	Flexindicator 2	unique identifier (trade id)
\.	Dot	
[A-Z]{3}	Extension for compressed reports	TXT.ZIP, CSV.ZIP, XML.ZIP

Example EurexOTC end-of-day report Prod 84RPTCB202GDBXX20210319.XML.ZIP
Example EurexOTC intraday report Prod 84RPTCI205GDBXX20210319105934.XML.ZIP
Example EurexOTC end-of-day report Simu 85RPTCB202GDBXX20210319.XML.ZIP
Example EurexOTC intraday report Simu 85RPTCI205GDBXX20210319105934.XML.ZIP

6.1.7 Buy-In Agent Report Naming Conventions

Field	Meaning	Remark
[0-9]{2}	Environment ID	04, 05 (Prod, Simu)
[0-9A-Z]{8}	Report name	i.e. RPTBIxxx
[0-9A-Z]{5}	Member ID	i.e. GDBXX
[0-9]{8}	Business date	YYYYMMDD
n.a.	Flexindicator 1	n.a.
[A-Z]{4}	Flexindicator 2	n.a.
\.	Dot	
[A-Z]{3}\.ZIP	Extension for compressed reports	CSV.ZIP, XML.ZIP, TXT.ZIP, PDF.ZIP

Example Buy-In Agent report Prod 04RPTBI000MEMIDYYYYMMDD.PDF.ZIP

Example Buy-In Agent report Simu 05RPTBI000MEMIDYYYYMMDD.PDF.ZIP

6.2 CRE General File Naming Conventions

Files, such as theoretical price files in Eurex or instrument reference data files are called non-transactional reports. The naming conventions for non-transactional reports are slightly different from report naming conventions.

6.2.1 T7 Derivatives Markets File Naming Conventions

Field	Meaning	Remark
[0-9]{2}	Environment ID	90, 95 (Prod, Simu)
[0-9A-Z]{8}	Filename	i.e.
[0-9A-Z]{5}	Member ID	i.e. PUBLI
[0-9]{8}	Business date	YYYYMMDD
[A-Z]{4}	Flexindicator 1	intraday/end of day identifier
n.a.	Flexindicator 2	n.a.
\.	Dot	
[A-Z]{3}\.ZIP	Extension for compressed files	CSV.ZIP, LIS.ZIP, TXT.ZIP, XML.ZIP

Example Eurex Trading file Prod 90FILTRFCPPUBLI20210316XEUR.CSV.ZIP

Example Eurex Trading file Simu 95FILTRFCPPUBLI20210316XEUR.CSV.ZIP

6.2.2 T7 Derivatives Markets Reference Data File (RDF) Naming Conventions

Field	Meaning	Remark
[0-9]{2}	Environment ID	90, 95 (Prod, Simu)
[0-9A-Z]{8}	Report name	i.e. FILRDF01
[0-9A-Z]{5}	Member ID	PUBLI
[0-9]{8}	Business date	YYYYMMDD
[A-Z]{4}	Flexindicator 1	MIC Code
[A-Z]{4}	Flexindicator 2	n.a.
[0-9A-Z]{5}	Timestamp	UTC second of the year when the initial file (sequence number 000) was created, base36 encoded
[0-9]{3}	Sequence number	000 – 999
\.	Dot	
[A-Z]{3}\.ZIP	extension for compressed files	XML.ZIP

Example Eurex RDF Prod 90FILRDF01PUBLI20210316XEUR3SY6F000.XML.ZIP

Example Eurex RDF Simu 95FILRDF01PUBLI20210316XEUR3SY6F000.XML.ZIP

Example EEX RDF Prod 90FILRDF01PUBLI20210316XEEE3SY68001.XML.ZIP

Example EEX RDF Simu 95FILRDF01PUBLI20210316XEEE3SY68001.XML.ZIP

6.2.3 T7 Xetra File Naming Conventions

Field	Meaning	Remark
[0-9]{2}	Environment ID	51, 52 (Prod, Simu)
[0-9A-Z]{8}	Filename	i.e. FILLE01
[0-9A-Z]{5}	Member ID	i.e. PUBLI
[0-9]{8}	Business date	YYYYMMDD
[A-Z]{4}	Flexindicator 1	n.a.
n.a.	Flexindicator 2	n.a.
\.	Dot	
[A-Z]{3}\.ZIP	Extension for compressed files	CSV.ZIP, LIS.ZIP, TXT.ZIP, XML.ZIP

Example Xetra T7 file Prod 51FILLEI01PUBLI20210319.CSV.ZIP

Example Xetra T7 file Simu 52FILLEI01PUBLI20210319.CSV.ZIP

6.2.4 T7 Xetra Reference Data File (RDF) Naming Conventions in Public Area

Field	Meaning	Remark
[0-9]{2}	Environment ID	51, 52 (Prod, Simu)
[0-9A-Z]{8}	Report name and ID	FILRDF01(dynamic) FILRDF02 (static)
[0-9A-Z]{5}	Member ID	PUBLI
[0-9]{8}	Business date	YYYYMMDD
[A-Z]{4}	Flexindicator 1	MIC Code
[A-Z]{4}	Flexindicator 2	n.a.
[0-9A-Z]{5}	Timestamp	UTC second of the year when the initial file (sequence number 000) was created, base36 encoded
[0-9]{3}	Sequence number	000
\.	Dot	
[A-Z]{3}\.ZIP	extension for compressed files	XML.ZIP

Example Xetra T7 RDF Prod 51FILRDF01PUBLI20131218XETR3OSKW000.XML

51FILRDF02PUBLI20131218XETR.ZIP

Example Xetra T7 RDF Simu 52FILRDF01PUBLI20131218XETR3OSKW000.XML

52FILRDF02PUBLI20131218XETR.ZIP

Current list of valid Xetra MIC codes for Xetra T7:	
XETR	Xetra Frankfurt
XMAL	Xetra Malta
XBUL	Xetra Bulgaria

6.2.5 T7 Börse Frankfurt File Naming Conventions

Field	Meaning	Remark
[0-9]{2}	Environment ID	61, 62 (Prod, Simu)
[0-9A-Z]{8}	Filename	i.e. FILLE01
[0-9A-Z]{5}	Member ID	i.e. PUBLI
[0-9]{8}	Business date	YYYYMMDD
[A-Z]{4}	Flexindicator 1	n.a.
n.a.	Flexindicator 2	n.a.
\.	Dot	
[A-Z]{3}\.ZIP	Extension for compressed files	CSV.ZIP, LIS.ZIP, TXT.ZIP, XML.ZIP

Example Xetra T7 file Prod 61FILLEI01PUBLI20210319.CSV.ZIP

Example Xetra T7 file Simu 62FILLEI01PUBLI20210319.CSV.ZIP

6.2.6 T7 Börse Frankfurt and Börse Frankfurt Zertifikate Reference Data

Field	Meaning	Remark
[0-9]{2}	Environment ID	61, 62 (Prod, Simu)
[0-9A-Z]{8}	Report name and ID	FILRDF02 (static) FILRDF01 (BF+BFZ, intraday)* FILRDF03 (BF) FILRDF04 (BFZ) FILRDF05 (BFZ BALFR) FILRDF06 (BFZ ICFFR)
[0-9A-Z]{5}	Member ID	PUBLI
[0-9]{8}	Business date	YYYYMMDD
[A-Z]{4}	Flexindicator 1	MIC Code
[A-Z]{4}	Flexindicator 2	n.a.
[0-9A-Z]{5}	Timestamp	UTC second of the year when the initial file (sequence number 000) was created, base36 encoded
[0-9]{3}	Sequence number	000
\.	Dot	
[A-Z]{3}\.ZIP	extension for compressed files	XML.ZIP CSV.ZIP

*Please note: Only the RDF01 incremental file will list potentially changed instrument attributes.

Example T7 Börse Frankfurt RDF Prod 61FILRDF02PUBLI20190506XFRA.ZIP

61FILRDF01PUBLI20190506XFRA6CMHD000.XML.ZIP
61FILRDF01PUBLI20190506XFRA6CMHD000.CVS.ZIP

Example T7 Börse Frankfurt RDF Simu 62FILRDF02PUBLI20190506XFRA.ZIP

62FILRDF01PUBLI20190506XFRA6CMHD000.XML.ZIP
62FILRDF01PUBLI20190506XFRA6CMHD000.CVS.ZIP

6.2.7 CCP (C7 SCS) File Naming Conventions

Field	Meaning	Remark
[0-9]{2}	Environment ID	20, 21 (Prod, Simu)
[0-9A-Z]{8}	Filename	i.e. FPICTHEC
[0-9A-Z]{5}	Member ID	i.e. PAKFR
[0-9]{8}	Business date	YYYYMMDD
n.a.	Flexindicator 1	n.a.
n.a.	Flexindicator 2	n.a.
\.	Dot	
[A-Z]{3}\.ZIP	Extension for compressed files	CSV.ZIP, LIS.ZIP, TXT.ZIP, XML.ZIP

Example CCP theoretical price file Prod 20FPICTHEBPUBLI20210319.TXT.ZIP

Example CCP theoretical price file Simu 21FPICTHEBPUBLI20210319.TXT.ZIP

6.2.8 Eurex Clearing Prisma File Naming Conventions - Public Area

Field	Meaning	Remark
[0-9]{2}	Environment ID	00, 01 (Prod, Simu)
[0-9A-Z]{8}	Report name	i.e. FILTHEOI
[0-9A-Z]{5}	Member ID	PUBLI
[0-9]{8}	Business date	YYYYMMDD
[0-9A-Z_-\]{0,34}	Flexindicator 1 Flexindicator 2	<file_type> <version> <tech_split_ident> - <max_split_tech>
[A-Z]{3}\.ZIP	Extension for compressed files	CSV.ZIP, LIS.ZIP, TXT.ZIP, XML.ZIP

Examples Open interest theoretical price file Prod 00FILTHEOIPUBLI20210319EEXCNIEODX01_01.TXT.ZIP

Examples Open interest theoretical price file Simu 01FILTHEOIPUBLI20210319EEXCNIEODX01_01.TXT.ZIP

Examples of Other files (End of day, no technical split needed) Prod 00FILFOREXPUBLI20170807EUXCEODX.TXT.ZIP

00FILRIMECPUBLI20170807EUXCEODX.TXT.ZIP

Examples of Other files (End of day, no technical split needed) Simu 01FILFOREXPUBLI20170807EUXCEODX.TXT.ZIP

01FILRIMECPUBLI20170807EUXCEODX.TXT.ZIP

6.2.9 Eurex Clearing Prisma File Naming Conventions for Member Specific Files

Field	Meaning	Remark
[0-9]{2}	Environment ID	00, 01 (Prod, Simu)
[0-9A-Z]{8}	File name	i.e. FILTHEOI
[0-9A-Z]{5}	Member ID	i.e. PAKFR
[0-9]{8}	Business date	YYYYMMDD
[0-9A-Z_\\-]{0,34}	Flexindicator 1 Flexindicator 2	<clgmember_id> <version> <tech_split_ident> _ <max_split_tech>
\\.	Dot	
[A-Z]{3}\\.ZIP	Extension for compressed files	CSV.ZIP, LIS.ZIP, TXT.ZIP, XML.ZIP

Example: Open interest theoretical price files intraday Prod 00FILTHEOIGDBXX20210319CBKFREUXCSODX01_01.TXT.ZIP

Example: Open interest theoretical price files intraday Simu 01ILTTHEOIGDBXX20210319CBKFREUXCSODX01_01.TXT.ZIP

Example: Open interest theoretical price files EOD Prod 00FILTHEOGDBXX20210319CBKFREUXCEODX01_01.TXT.ZIP

Example: Open interest theoretical price files EOD Simu 01FILTHEOIGDBXX0210319CBKFREUXCEODX01_01.TXT.ZIP

6.2.10 Regulatory Reporting Eurex and FWB (Non-MIFIR Reporting)

Field	Meaning	Remark
[0-9]{2}	Environment ID	88, 89 (Prod, Simu)
[0-9A-Z]{8}	Report Name	TVEXT001 TVFBK001 TVBKU001
[0-9A-Z]{5}	Member ID	ABCLO
[0-9]{8}	Trading Date	YYYYMMDD
[0-9]{6}	Timestamp (for feedback files)	HHMMSS
[0-9A-Z]{4}	MIC	XEUR, XETR, XFRA
[0-9A-Z]{3}	File type	.CSV.ZIP

File name for a Venue Extract in the production environment is 88TVEXT001ABCLO20220304XEUR.CSV.ZIP

File name for a Venue Extract in the simulation environment is 89TVEXT001ABCLO20220304XEUR.CSV.ZIP

Feedback file to upload file Prod 88TVFBK001ABCLO20220305125959XEUR.CSV.ZIP

Feedback file to upload file Simu 89TVFBK001ABCLO20220305125959XEUR.CSV.ZIP

Backup enrichment feedback file Prod 88TVBKU001ABCLO20220304XEUR.CSV.ZIP

Backup enrichment feedback file Simu 89TVBKU001ABCLO20220304XEUR.CSV.ZIP

6.3 Corrupted Reports and Files

A report or file not following the naming conventions might be corrupt. Occurrence of such reports should be reported to Deutsche Börse AG Group Client Key Account Management

Example for a corrupted report: 01RPTTA111PAKFR20120301GDBXX.TXT.ZIP_INC

6.4 Report Availability

Scripts fetching reports automatically from the servers should be configured accordingly in a given time frame (please see website <https://deutsche-boerse.com/dbg-en/products-services/ps-technology/service-status>). The CRE servers run 24/7 with the following exceptions: Several downtimes per year for general hardware maintenance, typically during Saturdays/Sundays. Nevertheless, permanent session log in is not supported. Regular member database software maintenance is executed from Monday to Friday at about 10.45 pm to 11.30 pm (key importing). If necessary, additional software maintenance will take place especially on weekends. Following maintenance, a new login needs to be performed.

Deutsche Börse reserves the right to introduce technical limitations on the number of requests allowed per timeframe and business partner, if necessary. It is recommended to keep an interval of at least 1 or 2 minutes between individual connection attempts to the CRE.

6.5 Historical Reports: Restore Directory

A new 'restore' directory can be created on the business day directory level of the member area. This directory is created and populated if participants manually order the retransmission of historical files and reports that are no longer available on the CRE.

As usual ordering of historical reports needs to be arranged with the help of cts@deutsche-boerse.com

A directory will also be created and populated with reports or files that outdate the history-keeping period. An existing 'restore' directory will also be available for a minimum of 10 business days.

The download and saving of all relevant reports is recommended since the restore of reports older than 10 business days is liable to additional charges.

6.6 Streamlined EOL Encoding

All reports and files available on the CRE use a carriage return line feed character <CRLF> as line separator.

7 Appendix A

See examples of log file / output of successful connections to the CRE below.

7.1 Example of successful WinSCP connection log file

```
Debug level 1 is set:

. 2012-08-01 13:27:08.342 -----
-----
. 2012-08-01 13:27:08.342 WinSCP Version 4.3.2 (Build 1201) (OS 5.2.3790
Service Pack 2)
. 2012-08-01 13:27:08.342 Login time: Wednesday, August 01, 2012 1:27:08 PM
. 2012-08-01 13:27:08.342 -----
-----
. 2012-08-01 13:27:08.342 Session name: 1027709_000001@193.29.90.67
. 2012-08-01 13:27:08.342 Host name: 193.29.90.67 (Port: 2222)
. 2012-08-01 13:27:08.342 User name: 1027709_000001 (Password: No, Key file:
Yes)
. 2012-08-01 13:27:08.342 Tunnel: No
. 2012-08-01 13:27:08.342 Transfer Protocol: SFTP
. 2012-08-01 13:27:08.342 Ping type: -, Ping interval: 30 sec; Timeout: 15
sec
. 2012-08-01 13:27:08.342 Proxy: none
. 2012-08-01 13:27:08.342 SSH protocol version: 2; Compression: Yes
. 2012-08-01 13:27:08.342 Bypass authentication: No
. 2012-08-01 13:27:08.342 Try agent: Yes; Agent forwarding: No;
TIS/CryptoCard: No; KI: Yes; GSSAPI: No
. 2012-08-01 13:27:08.342 Ciphers: aes,blowfish,3des,WARN,arcfour,des;
Ssh2DES: No
. 2012-08-01 13:27:08.342 SSH Bugs: -,-,-,-,-,-,-,-,-
. 2012-08-01 13:27:08.342 SFTP Bugs: -,-
. 2012-08-01 13:27:08.342 Return code variable: Autodetect; Lookup user
groups: Yes
. 2012-08-01 13:27:08.342 Shell: default
. 2012-08-01 13:27:08.342 EOL: 0, UTF: 2
. 2012-08-01 13:27:08.342 Clear aliases: Yes, Unset nat.vars: Yes, Resolve
symlinks: Yes
. 2012-08-01 13:27:08.342 LS: ls -la, Ign LS warn: Yes, Scpl Comp: No
. 2012-08-01 13:27:08.342 Local directory: default, Remote directory: home,
Update: No, Cache: Yes
. 2012-08-01 13:27:08.342 Cache directory changes: Yes, Permanent: Yes
. 2012-08-01 13:27:08.342 DST mode: 1
. 2012-08-01 13:27:08.342 -----
-----
. 2012-08-01 13:27:08.358 Looking up host "193.29.90.67"
. 2012-08-01 13:27:08.358 Connecting to 193.29.90.67 port 2222
. 2012-08-01 13:27:08.358 Waiting for the server to continue with the
```

```
initialisation
. 2012-08-01 13:27:08.358 Detected network event
. 2012-08-01 13:27:08.373 Detected network event
. 2012-08-01 13:27:08.373 Server version: SSH-2.0-OpenSSH_5.3
. 2012-08-01 13:27:08.373 We believe remote version has SSH-2 ignore bug
. 2012-08-01 13:27:08.373 Using SSH protocol version 2
. 2012-08-01 13:27:08.373 We claim version: SSH-2.0-WinSCP_release_4.3.2
. 2012-08-01 13:27:08.373 Waiting for the server to continue with the
initialisation
. 2012-08-01 13:27:08.373 Detected network event
. 2012-08-01 13:27:08.373 Doing Diffie-Hellman group exchange
. 2012-08-01 13:27:08.373 Waiting for the server to continue with the
initialisation
. 2012-08-01 13:27:08.420 Detected network event
. 2012-08-01 13:27:08.420 Doing Diffie-Hellman key exchange with hash SHA-1
. 2012-08-01 13:27:08.639 Waiting for the server to continue with the
initialisation
. 2012-08-01 13:27:08.639 Detected network event
. 2012-08-01 13:27:08.967 Host key fingerprint is:
. 2012-08-01 13:27:08.967 ssh-rsa 2048
3b:c0:a4:8d:a2:a0:f7:2b:a1:2e:0c:b7:f4:02:9d:c7
. 2012-08-01 13:27:08.967 Initialised AES-256 SDCTR client->server encryption
. 2012-08-01 13:27:08.967 Initialised HMAC-SHA2 client->server MAC algorithm
. 2012-08-01 13:27:08.967 Initialised AES-256 SDCTR server->client encryption
. 2012-08-01 13:27:08.967 Initialised HMAC-SHA2 server->client MAC algorithm
. 2012-08-01 13:27:08.967 Waiting for the server to continue with the
initialisation
. 2012-08-01 13:27:09.014 Detected network event
. 2012-08-01 13:27:09.014 Reading private key file "C:\Program
Files\putty\cre_test_1_priv.ppk"
! 2012-08-01 13:27:09.014 Using username "1027709_000001".
. 2012-08-01 13:27:09.014 Waiting for the server to continue with the
initialisation
. 2012-08-01 13:27:09.076 Detected network event
. 2012-08-01 13:27:09.092 Offered public key
. 2012-08-01 13:27:09.092 Waiting for the server to continue with the
initialisation
. 2012-08-01 13:27:09.092 Detected network event
. 2012-08-01 13:27:09.092 Offer of public key accepted
! 2012-08-01 13:27:09.092 Authenticating with public key "rsa-key-20110318"
. 2012-08-01 13:27:09.514 Waiting for the server to continue with the
initialisation
. 2012-08-01 13:27:09.670 Detected network event
. 2012-08-01 13:27:09.670 Access granted
. 2012-08-01 13:27:09.670 Waiting for the server to continue with the
initialisation
. 2012-08-01 13:27:09.873 Detected network event
. 2012-08-01 13:27:09.873 Opened channel for session
. 2012-08-01 13:27:09.873 Waiting for the server to continue with the
```

```
initialisation
. 2012-08-01 13:27:10.076 Detected network event
. 2012-08-01 13:27:10.076 Started a shell/command
. 2012-08-01 13:27:10.076 -----
-----
. 2012-08-01 13:27:10.076 Using SFTP protocol.
. 2012-08-01 13:27:10.076 Doing startup conversation with host.
> 2012-08-01 13:27:10.076 Type: SSH_FXP_INIT, Size: 5, Number: -1
. 2012-08-01 13:27:10.076 Sent 9 bytes
. 2012-08-01 13:27:10.076 There are 0 bytes remaining in the send buffer
. 2012-08-01 13:27:10.076 Waiting for another 4 bytes
. 2012-08-01 13:27:10.076 Detected network event
. 2012-08-01 13:27:10.076 Received 99 bytes (0)
. 2012-08-01 13:27:10.076 Read 4 bytes (95 pending)
. 2012-08-01 13:27:10.076 Read 95 bytes (0 pending)
< 2012-08-01 13:27:10.076 Type: SSH_FXP_VERSION, Size: 95, Number: -1
. 2012-08-01 13:27:10.076 SFTP version 3 negotiated.
. 2012-08-01 13:27:10.076 Unknown server extension posix-
rename@OpenSSH.com="1"
. 2012-08-01 13:27:10.076 Unknown server extension statvfs@OpenSSH.com="2"
. 2012-08-01 13:27:10.076 Unknown server extension fstatvfs@OpenSSH.com="2"
. 2012-08-01 13:27:10.076 We believe the server has signed timestamps bug
. 2012-08-01 13:27:10.076 We will use UTF-8 strings for status messages only
. 2012-08-01 13:27:10.076 Limiting packet size to OpenSSH sftp-server limit
of 262148 bytes
. 2012-08-01 13:27:10.092 Getting current directory name.
. 2012-08-01 13:27:10.092 Getting real path for '.'
> 2012-08-01 13:27:10.092 Type: SSH_FXP_REALPATH, Size: 10, Number: 1296
. 2012-08-01 13:27:10.092 Sent 14 bytes
. 2012-08-01 13:27:10.092 There are 0 bytes remaining in the send buffer
. 2012-08-01 13:27:10.092 Waiting for another 4 bytes
. 2012-08-01 13:27:10.092 Detected network event
. 2012-08-01 13:27:10.092 Received 27 bytes (0)
. 2012-08-01 13:27:10.092 Read 4 bytes (23 pending)
. 2012-08-01 13:27:10.092 Read 23 bytes (0 pending)
< 2012-08-01 13:27:10.092 Type: SSH_FXP_NAME, Size: 23, Number: 1296
. 2012-08-01 13:27:10.092 Real path is '/'
. 2012-08-01 13:27:10.092 Listing directory "/".
> 2012-08-01 13:27:10.092 Type: SSH_FXP_OPENDIR, Size: 10, Number: 1547
. 2012-08-01 13:27:10.092 Sent 14 bytes
. 2012-08-01 13:27:10.092 There are 0 bytes remaining in the send buffer
. 2012-08-01 13:27:10.092 Waiting for another 4 bytes
. 2012-08-01 13:27:10.092 Detected network event
. 2012-08-01 13:27:10.092 Received 17 bytes (0)
. 2012-08-01 13:27:10.092 Read 4 bytes (13 pending)
. 2012-08-01 13:27:10.092 Read 13 bytes (0 pending)
< 2012-08-01 13:27:10.092 Type: SSH_FXP_HANDLE, Size: 13, Number: 1547
> 2012-08-01 13:27:10.092 Type: SSH_FXP_READDIR, Size: 13, Number: 1804
. 2012-08-01 13:27:10.092 Sent 17 bytes
```

```
. 2012-08-01 13:27:10.092 There are 0 bytes remaining in the send buffer
. 2012-08-01 13:27:10.092 Waiting for another 4 bytes
. 2012-08-01 13:27:10.248 Detected network event
. 2012-08-01 13:27:10.248 Received 1903 bytes (0)
. 2012-08-01 13:27:10.248 Read 4 bytes (1899 pending)
. 2012-08-01 13:27:10.248 Read 1899 bytes (0 pending)
< 2012-08-01 13:27:10.248 Type: SSH_FXP_NAME, Size: 1899, Number: 1804
> 2012-08-01 13:27:10.248 Type: SSH_FXP_READDIR, Size: 13, Number: 2060
. 2012-08-01 13:27:10.248 Sent 17 bytes
. 2012-08-01 13:27:10.248 There are 0 bytes remaining in the send buffer
. 2012-08-01 13:27:10.248 Read file '.' from listing
. 2012-08-01 13:27:10.248 Read file '..' from listing
. 2012-08-01 13:27:10.248 Read file 'gdbxx' from listing
. 2012-08-01 13:27:10.248 Waiting for another 4 bytes
. 2012-08-01 13:27:10.248 Detected network event
. 2012-08-01 13:27:10.248 Received 32 bytes (0)
. 2012-08-01 13:27:10.248 Read 4 bytes (28 pending)
. 2012-08-01 13:27:10.248 Read 28 bytes (0 pending)
< 2012-08-01 13:27:10.248 Type: SSH_FXP_STATUS, Size: 28, Number: 2060
< 2012-08-01 13:27:10.248 Status code: 1
> 2012-08-01 13:27:10.248 Type: SSH_FXP_CLOSE, Size: 13, Number: 2308
. 2012-08-01 13:27:10.248 Sent 17 bytes
. 2012-08-01 13:27:10.248 There are 0 bytes remaining in the send buffer
. 2012-08-01 13:27:10.248 Startup conversation with host finished.
. 2012-08-01 13:27:10.311 Session upkeep
. 2012-08-01 13:27:10.311 Detected network event
. 2012-08-01 13:27:10.311 Received 28 bytes (0)
. 2012-08-01 13:27:14.498 Session upkeep
. 2012-08-01 13:27:14.529 Closing connection.
. 2012-08-01 13:27:14.529 Sending special code: 12
. 2012-08-01 13:27:14.529 Sent EOF message
```

8 Appendix B

8.1 Markets and Markets Included

CRE	Market	Environment	Included Market	MIC Code	
CRE area A	CCP / C7 SCS	PRODUCTION	CCP / C7 SCS SEC Lending	n.a.	
		SIMULATION	CCP / C7 SCS SEC Lending	n.a.	
	Derivatives Markets	PRODUCTION	EUREX EEX OTC Clear	XEUR XEEE n.a.	
		SIMULATION	EUREX EEX OTC Clear	XEUR XEEE n.a.	
	Cash Markets	PRODUCTION	XETRA MALTA SE BULGARIAN SE	XETR XMAL XBUL	
		SIMULATION	XETRA MALTA SE BULGARIAN SE	XETR XMAL XBUL	
	Börse Frankfurt	PRODUCTION	XETRA FFM2	XFRA	
		SIMULATION	XETRA FFM2	XFRA	
	CRE area B	Eurex Repo	PRODUCTION	Eurex Repo	XEUP
			SIMULATION	Eurex Repo	XEUP
Eurex STS		PRODUCTION	BUY_IN_AGENT	n.a.	
		SIMULATION	BUY_IN_AGENT	n.a.	
Reg. Rep. Eurex and FWB		PRODUCTION	MIFID	XEUR, XETR, XFRA	
		SIMULATION	MIFID	XEUR, XETR, XFRA	

8.2 CRE Environment Number and Area

CRE AREA – A	CRE AREA – B
00 Eurex Clearing Production	04 Eurex STS Buy-In Agent Production
01 Eurex Clearing Simulation	05 Eurex STS Buy-In Agent Simulation
20 CCP / C7 SCS Production	14 Eurex Repo Production
21 CCP / C7 SCS Simulation	15 Eurex Repo Simulation
51 T7 Cash Market Production (Xetra)	19 Eurex Repo Advanced Simulation
52 T7 Cash Market Simulation (Xetra)	88 Reg. Rep. Eurex and FWB Production
61 T7 Xetra FFM2 Production (Börse Frankfurt)	89 Reg. Rep. Eurex and FWB Simulation
62 T7 Xetra FFM2 Simulation (Börse Frankfurt)	
84 Eurex OTC Production	
85 Eurex OTC Simulation	
90 T7 Derivatives Production (Eurex, EEX)	
95 T7 Derivatives Simulation (Eurex, EEX)	

9 Change Log

The change log serves as a record of the latest major changes.

Version	Date	Chapter, page	Change
2022.08	5 August 2022	4.1	Deleted Regulatory Reporting Hub from CRE B